

OFF
SQUARE
THEATRE
COMPANY

THIEME YOUTH MUSICAL



DREAMWORKS
THEATRICALS

SHREK

The
MUSICAL

Dear Friends

We are thrilled to open this year's season with a fun-loving show highlighting the voices of our community's young artists.

Theatre is fundamentally an expression of our shared humanity. It is thought-provoking and entertaining; it holds up the mirror and teaches us to see the world through the eyes of another. While often telling stories of our past or future, theatre is immediate and exciting, existing only in the present moment. Live performance brings all of us together for a one-of-a-kind shared experience.

Beyond artistic expression, theatre is a tool for community-building and connection. Nothing exemplifies this more than our annual Thieme Youth Musical. For weeks, a dedicated group of students – both cast and crew – have been collaborating to create the performance you are about to see. They are pushing themselves and taking risks; they have the courage to fail and the perseverance to try again. Most importantly, they are collaborating, strengthening relationships, and learning new skills. The youth musical experience will stay with our students long after the curtain drops.

Theatre arts education is a vital tool for youth in our complex, digital, isolating world. It is our honor to be part of empowering the next generation of creative, empathetic leaders. Thank you for joining us to celebrate the fearlessness of these student artists on and off the stage.



Natalia Duncan Macker
Producing Artistic Director



Faye Campbell
President

Our Mission

To create high-quality live theatre experiences that bridge divides



Off Square Theatre Company

presents



SHREK
The
MUSICAL

Based on the
DreamWorks Animation
Motion Picture
and
Book by William Steig

Director | **Sadie Frank**

Music Director | **Laura Huckin**

Choreographer | **Jaclyn Hansen-Kaufman**

Costume Design | **Dena DeMarco**

Scenic Design | **Molly Moon Thorn**

THERE WILL BE ONE TEN MINUTE INTERMISSION.

Shrek: The Musical is presented through special arrangement
with Music Theatre International (MTI).

All authorized performance materials are also supplied by MTI.
www.mitshows.com

The videotaping or other video or audio recording
of this production is strictly prohibited.

CAST

IN THE SWAMP

Shrek Xander Vanier
Donkey Hugh Reid
Mama Ogre Tara Preston
Papa Ogre Jack Tobiason
Little Shrek Nieve Camino

IN THE TOWER

Princess Fiona Maggie Berkenfield
Teen Fiona Riya Singh
Young Fiona Jenna Mendenhall
King Harold Langdon Wolfe
Queen Lillian Piper Benjamin

DULOC

Lord Farquaad Rowan Logan
Duloc Greeter Frances Reid
Bishop Jack Tobiason
Pied Piper Phoebe Werner
Dwarf Nieve Camino
Captain of the Guard Augie Henrie
Thelonius Olivia Chambers
Guards Gil Adams
Ophelia Bradof
Zizi Dowda
Joy Hayashida-Ludington
Matteo Oldani
James Tobiason
Wren Turner

CAST

DULOC, *continued*

<i>Duloc Dancers</i>	Piper Benjamin Charlie Bradley Nieve Camino Osha Chonczynski Annabelle Dombroski Lena Estay Sophie Floyd Eva Goldstein Sally Keenan Vivienne Mattheis Rylie Mollinet Maxine Oda Lexie Perez Kristen Petty Tara Preston Rose Repinski Olivia Russ Phoebe Scott Annie Statter Tessa Taow Sage Troxel Lilly Turner Phoebe Werner
----------------------------	---

FAIRYTALE CREATURES

<i>Pinocchio</i>	Oliver Eastman
<i>Gingy</i>	Drew McPeak
<i>Sugar Plum Fairy</i>	Frances Reid

CAST

FAIRYTALE CREATURES, *continued*

<i>Humpty Dumpty</i>	Tara Preston
<i>Sticks</i>	Annabelle Dombroski
<i>Brick</i>	Phoebe Turner
<i>Straw</i>	Vivienne Mattheis
<i>Big Bad Wolf</i>	Jack Tobiason
<i>Wicked Witch</i>	Piper Benjamin
<i>Ugly Duckling</i>	Rylie Mollinet
<i>Mama Bear</i>	Zoe Self
<i>Papa Bear</i>	Drake Wayland
<i>Baby Bear</i>	Jenna Mendenhall
<i>Elf</i>	Hazel Moser
<i>Fairy Godmother</i>	Riya Singh
<i>Mad Hatter</i>	Langdon Wolfe
<i>White Rabbit</i>	Rory Loudenslager
<i>Peter Pan</i>	Kade Mallen
<i>Rumpelstiltskin</i>	Al Macker
<i>Robin Hood</i>	Forrest Ramsey
<i>Little Red Riding Hood</i>	Savannah Sgroi

DRAGON'S KEEP

<i>Dragon</i>	Zoe Self
<i>Knights</i>	Osha Chonczynski
	Lena Estay
	Rose Repinski
	Annie Statter
<i>Skeletons</i>	Piper Benjamin
	Annabelle Dombroski
	Vivienne Mattheis

CAST

DRAGON'S KEEP, *continued*

<i>Skeletons, continued</i>	Rylie Mollinet Kristen Petty Tara Preston Frances Reid Phoebe Werner
<i>Dragon Puppeteers</i>	Ophelia Bradof Olivia Chambers Zizi Dowda Augie Henrie

*Duloc Performers
also appear as Rats and Choir Singers*

ORCHESTRA

Laura Huckin, *Conductor/Keyboard*

Jason Fritts, *Reed 1*

Sue Bybee, *Reed 1*

Mimi Scofield, *Violin 1*

Laura Wanek, *Violin 2*

Emma Bittner, *Cello*

Dean Scofield, *Trumpet*

Amanda Flosbach, *Horn*

Ron Maassen, *Trombone*

Clay Humphrey, *Guitar/Bass*

Ed Domer, *Drums*

Beth Post, *Flute Sub*

YOUTH MUSICAL CREW

Anneke Bradley, Parker Coleman,
Kershaw Finlay, Tripp Overbay, Zady Peterman,
Abby Russ, River Tondro-Smith

PRODUCTION TEAM

Producer Natalia Duncan Macker
Associate Producer Sadie Frank
Assistant Director Sarah Hollands Dropinski
Production Stage Manager Sarah McQuiggan
Stage Manager Mia Haws
Hair/Makeup Design & Assistant Costumer Caroline Monroe
Lighting Design Patrick Millard
Audio Design Pearson Beasley
Technical Directors Ed Smail & Elizabeth Taylor
Dance Captain Frances Reid
Dragon Puppet Artist Charley Daveler
Papier-mâché Artist Lori Solem
Company Manager Nanci Turner Steveson
Flyrail/Audio 2 Evan Grainger
ASL Interpreters Nichole Stanton & Kimberly Swanson

SPECIAL THANKS

Center for the Arts, St. John's Health Foundation, Sage Living,
Jane Linville, Eli Preston, Maggie Land,
Doug Ross, Jesse Rope, Miga Rossetti, Annaliese Hasse,
Nancy Jarrell, Kris Troxel, Bryan Nystrom

All the volunteers from participating families!

**The Thieme Youth Musical
was made possible by support from:**



**Walter I. "Mike" and Jean Louise Thieme Fund
of the Community Foundation of Jackson Hole**
(Advisor: Susan Rope)

ABOUT THIS PRODUCTION

Based on the Oscar-winning DreamWorks Animation film, *Shrek The Musical* is a Tony Award-winning fairytale adventure that brings all the beloved characters you know from the film to life on stage. This is the tale of an unlikely hero who finds himself on a life-changing journey.

In a faraway kingdom, the green ogre Shrek finds his swamp invaded by banished fairytale misfits, runaways who've been cast off by Lord Farquaad, a tiny terror with big ambitions. When Shrek sets off with a wise-cracking Donkey to confront Farquaad, he's handed a task – if he rescues feisty Princess Fiona from the Dragon-guarded tower, his swamp will be returned to him. Throw in a short-tempered bad guy, a cookie with an attitude and over a dozen other fairytale creatures, and you've got the kind of mess that calls for a new kind of hero. Irreverently fun for the whole family, Shrek proves that beauty is truly in the eye of the ogre.

Shrek The Musical is a heartwarming story for this moment. Producing this show with an energetic group of young performers is a reminder that we all have a role to play in creating a community that embraces our differences and finds strength in our diversity.

This story filled with love, friendship, and acceptance gives us all the courage to be who we truly are.

**DIG DEEPER INTO SHREK THE MUSICAL
IN THE PLAY GUIDE:**



THE THIEME YOUTH MUSICAL

Off Square Theatre produces the Thieme Youth Musical annually, honoring the legacy of Mike and Jean Louise Thieme. As dedicated Off Square Theatre board members and arts patrons, they believed it was imperative to offer high quality performing arts experiences for youth.

Each year, we honor their legacy by sharing the creative energy of youth on-stage, backstage, and in the audience. As part of the Thieme Youth Musical, students from four counties attend matinee performances, experiencing live theater created by their peers.



YOUTH EDUCATION PROGRAMS

Annual Thieme Youth Musical

Summer Camps

Missoula Children's Theatre

Master Classes

Playshops

Professional Internships

Wyoming Shakespeare Conservatory

Off Square Players

student-run production company

***Join the fun
and learn more at OffSquare.org***

CREATIVE TEAM



Pearson Beasley – Pearson is an audio engineer and musician in Jackson, hailing from Savannah, Georgia. His specialty is concert and corporate audio and he finds that working with Off Square Theatre Company for Thin Air Shakespeare and the Thieme Youth Musical is a highlight of each season.



Charley Daveler– Charley is a puppeteer and artist born and raised in Jackson. Bouncing around from L.A. to New York and even Perth, Australia, she boomerangs back every few years with just her sewing machine and three tubs of fabric. Her theatre career began 27 years ago when Off Square Theatre cast her as an orphan in *Oliver!*, launching a lifetime of writing, performing, and producing. She has worked on more than 50 different productions all across the world, including projects with the local companies Off Square Theatre, Tumbleweed, Riot Act, and the Jackson Hole Playhouse. Her newest project, *Old Crone Cobblestone*, a puppet show of fairy tales, will launch this summer on YouTube @WitchesTrunk and WitchesTrunk.com.



Dena DeMarco – Dena is excited to be costuming the musical *Shrek: The Musical* for the third time in her career as a Costume Designer. Since joining the Off Square Theatre Company production team in 2017 with *Beauty and The Beast*, she has enjoyed costuming all the youth musicals, the Thin Air Shakespeare productions of *Romeo & Juliet*, and many other adult productions – most recently *Sweeney Todd*. She hopes you enjoy the show and appreciate all the hard work put into it by the kids and the whole Center for the Arts/Off Square team behind the scenes making the magic happen!



Taralee Fairclough – Taralee grew up in Jackson Hole and is so grateful to be back in her mountain home. She studied music and theater at Elon University as well as The University of Utah and has worked professionally with theaters in the Mountain West and the Church of Jesus Christ of Latter-day Saints. Taralee is a proud momma of

three children and loves raising her kids under the Tetons. She wants to give a special thanks to her husband who supports her behind the scenes.



Sadie Frank – Sadie is a Jackson-based actor, director, and producer and is delighted to direct her second Thieme Youth Musical with *Shrek: The Musical*. With Off Square Theatre Company, credits include *The Thanksgiving Play* (Logan); *A Midsummer Night's Dream* (Puck); and *The Revolutionists* (Charlotte). Other performance

highlights include creating an original translation of Chekhov's *Seagull* and playing Nina; *Alice in Arden of Faversham*; and an operatic performance as the titular role in Offenbach's *La Périchole*. Her training includes a B.A. in drama from Vassar College and a semester of study at the Moscow Art Theatre School in Russia.



Jaclyn Hansen-Kaufman – All the way from sunny South Florida, Jaclyn is delighted to be choreographing her second Thieme Youth Musical production with Off Square Theatre Company! Jaclyn graduated from Long Island University Post, where she received her BFA in Musical Theatre. Selected credits include Johanna in

Sweeney Todd: The Demon Barber of Fleet Street, Show Girl/Royalty in *Annie Get Your Gun*, #2 in *The Wolves*, Christine/Trainer in *American Psycho*, and numerous dance credits with the Post Concert Dance Company. Jaclyn would like to thank her family and friends for their continued love and support – and she is beyond grateful for her Off Square Theatre family, for their guidance and trust!



Mia Haws – Mia began working with Off Square Theatre Company at the age of 8 in the role of Molly in *Annie* and continued performing in the youth musicals through high school. She is thrilled to be back as assistant stage manager for this production. Mia has discovered great satisfaction working on the production side of the stage while

helping with Off Square's productions of *Matilda Jr.* and *Oliver!* She is currently taking a break from studying theatre design and technology at Baylor University.



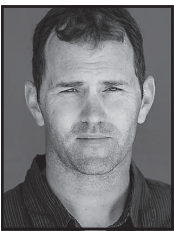
Sarah Hollands Dropinski – Sarah is thrilled to be back working with Off Square Theatre after her recent performance in Off Square Theatre Company's *Sweeney Todd* (Ensemble, u/s Beadle, u/s Beggar Woman). With a BFA in Musical Theatre from Pace University, Sarah has performed at regional theaters nationwide and is excited to

share her passion for musical theater with young artists! She has worked locally as a teaching artist with Dancers' Workshop and Tumbleweed Creative Arts.



Laura Huckin – Laura's musical training began with classical piano at age 7. She has been involved in music education and performance throughout the valley as a conductor, accompanist, and teacher for over 20 years. Her first production with Off Square Theatre was *Peter Pan* in 2007.

Other musical director credits include *Annie*, *Mary Poppins*, *Company*, *Chicago*, and *I Love You, You're Perfect, Now Change*. Laura is currently Artistic Director of Cathedral Voices Chamber Choir and has taken her ensemble to Carnegie Hall, Austria and Dublin in recent years. In addition to choral conducting, Laura currently teaches general music (K-8th grade) in Swan Valley, Idaho, serves as Music Director at the Presbyterian Church of Jackson Hole, and is a proud mother of two youngsters. She enjoys gardening, traveling, and Chopin.



Patrick Millard – Patrick is the Technical Director for The Center for the Arts. With expertise in sound design and lighting, Patrick plays a vital role in ensuring seamless productions. He is dedicated to collaboration and bringing artistic visions to life while also enhancing the cultural experience for audiences.



Sarah McQuiggan – Sarah is so happy to be returning to Off Square Theatre after recently Stage Managing *Sweeney Todd* with them back in October! She is a professional Stage Manager and Performer based out of New York City. Professional and University Stage Management credits include *Home for the Holidays* (Mountain Theatre Company) *South Pacific*, *Guys and Dolls* (Victory Productions)

Always...*Patsy Cline* (The Studio Theatre Tierra del Sol). *The Little Mermaid*, *Urinetown* (UWF). Sarah holds a BFA in Musical Theatre and a BA in Arts Administration from The University of West Florida. She thanks her family and friends for their love!
@sarahmcquiggan sarahmcquiggan.com



Caroline Monroe – Caroline fell in love with theatre when participating in Off Square Theatre Company’s youth musicals and returned in 2021 to work backstage on *Much Ado about Nothing* as an assistant costumer. Since then, she has continued to make costumes for Thin Air Shakespeare as well as independently. She recently completed a bachelor’s degree in communication at the University of Wyoming.



Ed Smail – Ed has been part of the Off Square Theatre story since its inception. After serving on the Board of Directors for 20 years, including two terms as President, he now dedicates his time to running the Off Square Theatre scene shop and serving as a technical director, carpenter, and creative collaborator. His carpentry and scenic work have been part of nearly every Off Square Theatre show. In 2015, he was the recipient of a Golden Hammer award from the Jackson Hole Cultural Council in recognition of his immeasurable impact on the performing arts community in Jackson, and Off Square Theatre in particular. You can find him in the scene shop masterminding a project to bring a designer’s vision to fruition or up in the music wing playing his guitar.



Jeffrey Scott Stevens – Jeffrey is a native of Wyoming and recently appeared as “The Beadle” in Off Square Theatre Company’s production of *Sweeney Todd*. Jeffrey has previously appeared in *A Midsummer Night’s Dream* and *Romeo & Juliet*. Jeffrey played Lord Farquaad in *Shrek: The Musical*, back in 2017 at Tuacahn Center for the Arts. He currently teaches Performing Arts at the Teton Science School Private Academy here in Jackson and is thrilled to be involved with some of his previous students from last year! NY & Regional Credits: *The Christmas Rose* at (Carnegie Hall), (Hunter) in [title of show] (The Secret Theatre Off-Broadway), (Patsy) in *Spamalot!* (Ogunquit Playhouse), *Young Frankenstein* (Gateway Playhouse), *Mamma Mia*

(Harry), *Newsies* at Tuacahn, Pioneer Theatre Company: *Chess*, *Miss Saigon*. (Fueilly) in *Les Misérables* at the Durham Center for the Arts in North Carolina, *Funny Girl* (Riverside Theatre), *A Chorus Line* (STAGES, St. Louis), and (Jinx) in *Forever Plaid* (Theatre by the Sea). Jeffrey was in the 2001 Grand Opening of *Tokyo Disney Sea*, in *The Dockside Porters*, the original productions of *Tangled, the Musical* & *Twice Charmed* for The Disney Magic Cruise Ship in 2015 & 2016. Locally, Jeffrey has appeared as a writer, actor, and director at The Jackson Hole Playhouse and can be seen as the MC for Snow King's Figure Skating School Winter Celebration and the Skating Club of Jackson Hole's Teton Village Skating Showcase in Winter.



Molly Moon Thorn – A local "Wilson kid", Molly grew up performing on the Pink Garter, Playhouse, Walk Festival Hall and Jackson Hole High School stages. In search of something completely different, sight unseen Molly attended the University of the South in Sewanee, Tennessee, where she obtained a BFA in Theatre Arts. An avid skier, rafter and wilderness wanderer, she returned to the Tetons to further explore this vast and glorious playground we are so blessed to call home. Molly is grateful to work, once again, with her brilliant and talented friends at Off Square Theatre.



Elizabeth Taylor – Elizabeth lives in Jackson with her husband, their two kids, and a crazy malamute. She is an alumna of The University of Colorado Boulder, where she earned her BFA in Theater Technology for Carpentry and Lighting. After college, Elizabeth worked for Montana Shakespeare in the Parks, MT Shakespeare in the Schools, and The MSU Black Box Theater. She began her work with Off Square as a carpenter and light board operator for *Music Man Jr.*

Thank you to the sponsors of the Rising Star Soirée Drawing!

The sponsor logos are arranged in two rows. The top row includes Off Square Theatre Company, Pearl Street Wine & Spirits, Cloudveil Fine Dining, and Genevieve Catering. The bottom row includes Gather Restaurant Group, Palate, Gather (multiple instances), and Halimaile General Store.



OFF SQUARE THEATRE BOARD OF DIRECTORS

Faye Campbell, *President*

Ruth Ann Petroff, *Past President*

Steve Ryan, *Treasurer/Secretary*

Heather Black

Jeff Counts

Erik Dombroski

Becky Eidemiller

Lynn D. Fleisher

Patty Jaquith

Karen Reid

Karen Rockey

Vandita Singh

Bayless Sword

Sandy Zuber

Honorary Board Members

Marge Ordway

Erika Pearsall

Ed Smail

Barbara Trachtenberg

Jade Walsh

ADMINISTRATIVE STAFF

Natalia Duncan Macker, *Producing Artistic Director*

Sadie Frank, *Education and Development Director*

Jaclyn Hansen-Kaufman, *Marketing and Office Manager*

Nanci Turner Steveson, *Engagement Director and Company Manager*



Off Square Theatre Company
is a member of
Theatre Communications Group (TCG),
which exists to strengthen, nurture and promote
professional theatre in the U.S. and globally.





Thank you



**The Madame X Society
has been supporting artistic excellence
and theatre arts education
for over 20 years.**

**Join this inspiring, fun,
and glamorous group
and play your part
in Off Square Theatre's
next act.**

***Learn more at offsquare.org
or email info@offsquare.org***



Listener Supported.

Locally curated music, news
and community affairs.



Member Sign Up

2024
KHOL
benefits
member card

891khol.org



**Parsons Behle & Latimer (formerly Ranck & Schwartz)
is pleased to support Off Square Theatre Company**

Jackson attorneys Bill and Leah Schwartz of Ranck & Schwartz have joined Parsons Behle & Latimer, one of the oldest and largest full-service law firms in the Intermountain West.

Parsons provides exceptional legal service to Wyoming businesses and residents. Learn more at parsonsbehle.com.



Leah C. Schwartz

lschwartz@parsonsbehle.com



William P. Schwartz

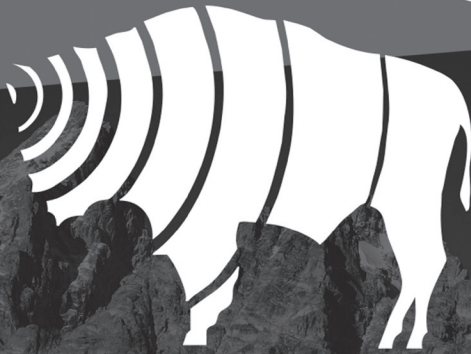
bschwartz@parsonsbehle.com

***A Different* LEGAL PERSPECTIVE**

IDAHO • MONTANA • NEVADA • UTAH • WYOMING

**PARSONS
BEHLE &
LATIMER**

20 East Simpson Avenue | Jackson, Wyoming 83001 | 307.733.5130 | parsonsbehle.com



WYOMING PUBLIC MEDIA

Connecting Wyoming
through music and news

Wyoming Public Radio

FM 90.3 (Jackson) | FM 89.9 (Teton Valley, ID)

Wyoming Sounds - **FM 97.3 (Jackson)**

Classical Wyoming - **FM 95.9 (Jackson)**

Wyoming Sounds - **FM 91.7 (Teton Valley, ID)**

Listen online at wyomingpublicmedia.org

The McPeak Group is a proud supporter of Off Square Theatre and Thin Air Shakespeare!

*... and specializes in plagued houses.
(Both of them.)*



The **McPeak Group**

Betsy Campbell :: Brett McPeak :: Des Jennings :: Emily Figenshaw
Jerilyn Arriola :: Kristine Abby :: Meagan Murtagh

307.222.9898 :: MPG@jhsir.com

www.McPeakGroup.com



Jackson
Hole

Sotheby's
INTERNATIONAL REALTY



SINGLETON | PEERY

F I N A N C I A L

RAYMOND JAMES®

(307) 732-6652 • singletonpeeryfinancial.com
170 East Broadway, Suite 100D • PO Box 508 • Jackson, WY 83001

Securities offered through Raymond James Financial Services, Inc., member FINRA/ SIPC.
Investment advisory services offered through Raymond James Financial Services Advisors,
Inc. Singleton Peery Financial is not a registered broker/ dealer and is independent of
Raymond James Financial Services.

A FRESH TASTE OF THE OLD WEST

JEDEDIAH'S

Catering & Concessions

JEDEDIAHS.COM

*Jedediah's is committed
to serving a
fresh taste of the Old West
via high quality food,
unwavering customer service,
and earth-friendly operations.*



*We proudly support
theatre arts education!*



aspens & pearl st

intown

pearl street market // pearl street wine and spirits
40 w pearl ave

on the village road

aspens market // westside wine and spirits
4015 lake creek drive

grocer • butcher • deli • wine and spirits • gifts

*live,
beautifully.*

Snake River
interiors

INTERIOR DESIGN | JACKSON, WY

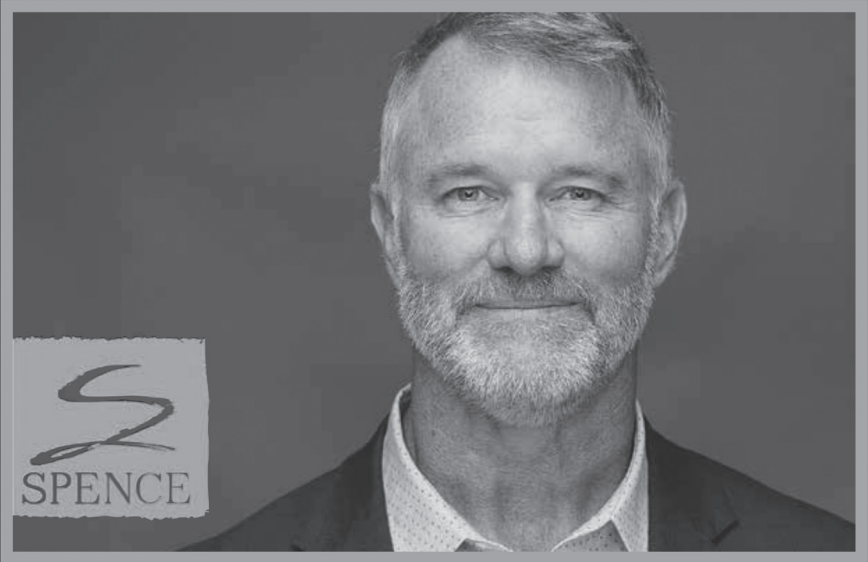
SNAKERIVERINTERIORS.COM | @SNAKERIVERINTERIORS

TWENTY TWO | HOME

SHOWROOM · ONLINE BOUTIQUE | JACKSON, WY

TWENTYTWOHOME.COM | @TWENTYTWOHOMEJH

WHEN TRAGEDY STRIKES,
YOU NEED A TEAM YOU CAN TRUST.



ANSWERING THE CALL FOR MORE THAN 70 YEARS.
YOUR FUTURE IS OUR FOCUS.

MEL C. ORCHARD, III, TRIAL LAWYER

CO-COUNSEL | TRIAL COUNSEL | RESOURCES
OVER \$1 BILLION IN VERDICTS & SETTLEMENTS

SPENCELAWYERS.COM

307-733-7290

ORCHARD@SPENCELAWYERS.COM

THE SPENCE LAW FIRM, LLC | 15 S. JACKSON ST., JACKSON, WY 83001 | 232 E. 2ND ST., CASPER, WY 82601
THE SPENCE LAW FIRM NM, LLC | 1600 MOUNTAIN RD NW, ALBUQUERQUE, NM 87104 | 505-832-6363

OFF
SQUARE
THEATRE
COMPANY

2025 SEASON

Disney
SHREK
The Musical

FEB 21-22

● THE CENTER THEATER

MISSOULA
CHILDREN'S
THEATRE
A PRODUCTIONS OF MCT, INC.

TREASURE ISLAND

APRIL 12

● THE CENTER THEATER

Three Sisters

BY ANTON CHEKHOV
STAGED READING



MAY 31 - JUNE 1

BLACK BOX ● THE CENTER

ThinAir
SHAKESPEARE



**TWELFTH
NIGHT**

JULY 11-13 & 17-20

● THE CENTER AMPHITHEATER



THE EFFECT

BY LUCY PREBBLE

OCT 16-25

BLACK BOX ● THE CENTER

OFF
SQUARE
PLAYERS

IN PERFORMANCE

DEC 12-14

BLACK BOX ● THE CENTER

OFFSQUARE.ORG

**DONATE NOW
TO SUPPORT
THEATRE ARTS EDUCATION**



venmo
@offsquaretheatre

Donate \$100 or more and be entered into a drawing for a Stay-cation Gift Basket!

Basket includes 2 nights at the Cloudveil, dining gift certificates, and wine from Pearl Street Wine & Spirits

offsquare.org/donate
PO Box 2920
Jackson, WY
83001